

Cubee



**CHOCOLATE
MOUSSE**



**NEW YORK
CHEESECAKE**

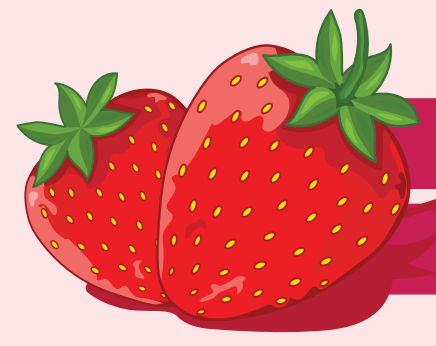


**STRAWBERRY
CREAM**

Cubee

CUBE UP YOUR DAY!

Each bite melts gently on the palate bringing a modern and playful twist to a classic flavor for a truly premium snacking moment.



**STRAWBERRY
CREAME**



Nutrition Facts

2 servings per container
 Serving size 0.9 oz (26g)

Amount per serving
Calories 143

	% Daily Value *
Total Fat 9g	11%
Saturated Fat 8g	38%
<i>Trans Fat</i> 0g	
Cholesterol 0mg	0%
Sodium 30mg	1%
Total Carbohydrate 15g	6%
Dietary Fiber 0g	0%
Total Sugars 9g	
Includes 9g Added Sugars	18%
Protein 2g	3%
Vitamin D 0mcg	0%
Calcium 52mg	4%
Iron 0mg	0%
Potassium 85mg	2%

* The % Daily Value tells you how much a nutrient in a serving of food contributes to a daily diet. 2,000 calories a day is used for general nutrition advice.

UNIT UPC



6 05832 70778 5

CASE UPC



6 05 83270 70840 8



Nutrition Facts	
2 servings per container	
Serving size	0.9 oz (26g)
Amount per serving	
Calories	150
	% Daily Value *
Total Fat 10g	13%
Saturated Fat 9g	43%
<i>Trans Fat</i> 0g	
Cholesterol 0mg	0%
Sodium 67mg	3%
Total Carbohydrate 14g	5%
Dietary Fiber 0g	0%
Total Sugars 6g	
Includes 6g Added Sugars	11%
Protein 2g	3%
Vitamin D 0mcg	0%
Calcium 50mg	4%
Iron 0mg	0%
Potassium 72mg	2%
* The % Daily Value tells you how much a nutrient in a serving of food contributes to a daily diet. 2,000 calories a day is used for general nutrition advice.	

UNIT UPC CASE UPC






CHOCOLATE MOUSSE



Nutrition Facts

2 servings per container
 Serving size 0.9 oz (26g)

Amount per serving
Calories 135

	% Daily Value *
Total Fat 7g	9%
Saturated Fat 6g	30%
<i>Trans Fat</i> 0g	
Cholesterol 0mg	0%
Sodium 20mg	1%
Total Carbohydrate 17g	6%
Dietary Fiber 0g	0%
Total Sugars 9g	
Includes 9g Added Sugars	18%
Protein 2g	3%
Vitamin D 0mcg	0%
Calcium 20mg	2%
Iron 2mg	10%
Potassium 200mg	4%

*The % Daily Value tells you how much a nutrient in a serving of food contributes to a daily diet. 2,000 calories a day is used for general nutrition advice.

UNIT UPC



6 05832 70779 2

CASE UPC



6 05 83270 70841 5



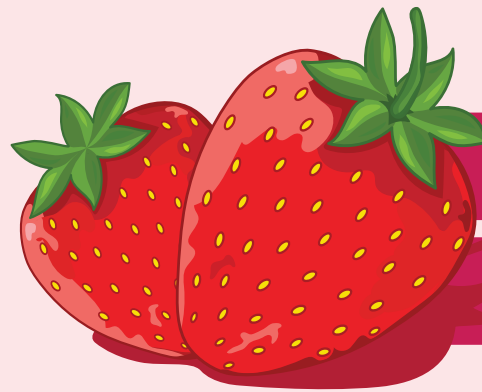
CHOCOLATE MOUSSE



INGREDIENTS: Chocolate Coating [Sugar, Vegetable Oil (Hydrogenated Palm Stearin Oil), Cocoa Powder, Cocoa Mass, Chocolate, Soy Lecithin, Glycerin Fatty Acid Ester, Artificial Chocolate Flavor], Corn Grit, Wheat Flour, Rice Flour, Cocoa Powder, Brown Liquid Color (Caramel Color, Propylene Glycol, Purified Water), Calcium Carbonate, Sugar, Enzymatically Modified Steviol Glycosides, Salt.

Contains: Wheat, Soy, Milk

PRODUCT OF KOREA



STRAWBERRY CREAM



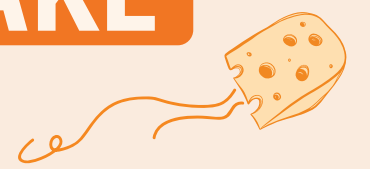
INGREDIENTS: Strawberry Cream [Sugar, Vegetable Oil (Hydrogenated Palm Stearin Oil), Milk Powder, Strawberry Powder, Soy Lecithin, Glycerin Fatty Acid Ester, Strawberry Puree, Vanillin, Artificial Strawberry Flavor], Corn Grit, Wheat Flour, Rice Flour, Calcium Carbonate, Salt, Carmine (Color), Sugar.

Contains: Wheat, Soy, Milk

PRODUCT OF KOREA



NEW YORK CHEESECAKE



INGREDIENTS: Vegetable Cream [Vegetable Oil (Hydrogenated Palm Stearin Oil), Sugar, Dextrin, Milk Powder, Cheesecake Powder, Salt, Soybean Lecithin, Glycerin Fatty Acid Ester, Artificial Cheesecake Flavor], Corn Grit, Wheat Flour, Rice Flour, Calcium Carbonate, Sugar, Salt, Enzymatically Modified Steviol Glycosides.

Contains: Wheat, Soy, Milk

PRODUCT OF KOREA

ITEM #	DESCRIPTION	PACK /SIZE	UPC		TI	HI	QTY	ITEM DIMS (INCH)	CASE DIMS (INCH)	CS (LB)	PLT (LB)
			UNIT	CASE							
CUB 101	CUBEE - CHOCOLATE MOUSSE	16/1.83 OZ	605832707792	60583270708415	9	10	90	5.5(L) x 7.5(H) X 2.25(D)	15.35 x 10.63 x 4.72	4.61	415
CUB 102	CUBEE - STRAWBERRY CREAM	16/1.83 OZ	605832707785	60583270708408	9	10	90	5.5(L) x 7.5(H) X 2.25(D)	15.35 x 10.63 x 4.72	4.61	415
CUB 103	CUBEE - NEW YORK CHEESECAKE	16/1.83 OZ	605832707808	60583270708422	9	10	90	5.5(L) x 7.5(H) X 2.25(D)	15.35 x 10.63 x 4.72	4.61	415